

The 2004 Open Dutch Championship for the Optimist, Splash and Flash Class will be sailed on the IJsselmeer off Workum, The Netherlands, May 20 – 23 inclusive, 2004. The Championship is organized under the authority of the Sailing Club Workum, the Royal Sailing Club Frisia, the Optimist Club of the Netherlands and the Splash Flash Class Organisation of the Netherlands, in conjunction with the Royal Netherlands Yachting Union.

## **SAILING INSTRUCTIONS**

### **1 RULES**

- 1.1 The regatta will be governed by the ‘rules’ as defined in The Racing Rules of Sailing.
- 1.2 The Rules for Championships Sailing and Boardsailing of the Royal Netherlands Yachting Union will apply.
- 1.3 Appendix N will apply, changed as follows:

N2.3 is modified to read:

N2.3 Third protest or more.

“When a boat is protested a third time or more during the series she may acknowledge her breach by immediately retiring from the race. If she fails to do so she shall be disqualified without a hearing and her score shall not be excluded”.

N3 is modified to read:

“if a boat has been protested under rule N1 and the Race Committee signals a postponement, general recall or abandonment, the penalty from her first protest only is cancelled, but the protest is counted to determine the number of times she has been protested during the series”.

Actions of the jury under this appendix shall be no grounds for seeking redress by a competitor.

- 1.4 All competitors shall be required to display advertising of the event sponsor on the boats in accordance with Appendix 1, Regulation 20.3(d)(i).
- 1.5 If there is a conflict between languages the English text will prevail.
- 1.6 Additional Starting Rules and Black Flag Amendments, changing rules 30.1 and 30.3:
  - 1.6.1. If a start under rule 30.3 should result in a General Recall, the sail numbers of the boats disqualified will, if possible, be displayed on the starting vessel.
  - 1.6.2. If a start under rule 30.3 does not result in a General Recall, a committee vessel stationed near mark 1 will, if possible, display the sail numbers of the boats disqualified under rule 30.3.
  - 1.6.3. A boat disqualified under rule 30.3 shall leave the racing area immediately unless she lodges a valid request for redress. The boat must announce her intention to lodge this request for redress by sailing along the other side of the committee boat at the starboard end of the finishing line immediately after finishing and inform the Race Committee of her intention to lodge this request until her intention to lodge this request has been acknowledged by the RC.

Should circumstances make it impossible to meet this requirement then the boat shall report its intent in the Regatta Office at the harbour immediately upon landing. A boat who fails to comply with this instruction shall be scored DNE without a hearing. This changes rule 63.1.

- 1.6.4 When the request for redress, submitted according to instruction 1.6.3, is not granted by the Jury, the boat will be scored DNE.
- 1.6.5 Failure of the RC to identify all boats having infringed rule 30.1 or 30.3 will not be grounds for seeking redress.

## **2 Spare.**

## **3 Spare.**

## **4 NOTICES TO COMPETITORS**

- 4.1 Notices to competitors will be posted on the official notice board(s) located near the Regatta Office.

## **5 CHANGES TO SAILING INSTRUCTIONS**

- 5.1 Any change to the sailing instructions will be posted before 09.00 on the day it will take effect, except that any change to the schedule of races will be posted by 20.00 on the day before it will take effect.

## **6 SIGNALS MADE ASHORE**

- 6.1 Signals made ashore will be displayed at one of the three official signal masts. These masts are located near the Regatta Office and near the ramp of each individual class. When a signal is displayed over a fleet and/or class flag it applies to that fleet and/or class only.

| Signal:   | Meaning:                                                                                                                                                                                                                          |
|-----------|-----------------------------------------------------------------------------------------------------------------------------------------------------------------------------------------------------------------------------------|
| flag "AP" | all races not started are postponed; do not leave the harbour area.                                                                                                                                                               |
| flag "A"  | boats shall proceed to their racing area, the starting signal will not be given within 60 minutes after the display of this flag. Boats shall not leave the harbour before this flag and their division flag have been displayed. |
| flag "H"  | competitors shall not leave the harbour area and shall await further instructions.                                                                                                                                                |

## **7 FORMAT OF THE CHAMPIONSHIP**

### *7.1 Optimist class and Splash class:*

- 7.1.1. The regatta for the Optimist class and Splash class will consist of a qualifying series and a final series.
- 7.1.2. The Optimist class will be divided into 8 divisions (as far as possible with the same number of boats) at the discretion of the RC.
- 7.1.3. The Splash class will be divided into 6 divisions (as far as possible with the same number of boats) at the discretion of the RC.

7.1.4. The division colours will be as follows:

| Nr.        | Division Colour and Flag |        |
|------------|--------------------------|--------|
|            | Optimist                 | Splash |
| Division 1 | Blue                     | Red    |
| Division 2 | Green                    | Green  |
| Division 3 | Red                      | Yellow |
| Division 4 | Yellow                   | Blue   |
| Division 5 | Orange                   | White  |
| Division 6 | Purple                   | Purple |
| Division 7 | Pink                     |        |
| Division 8 | White                    |        |

7.1.5. On Saturday 22 May, after protest hearings and when at least 6 valid qualifier races have been completed, the Optimist class will be split into 4 final fleets (called Gold, Silver, Bronze and Emerald) and the Splash class will be split into 3 final fleets (called Gold, Silver and Bronze), which will all sail a maximum of 2 final races. When less than 6 valid qualifier races are completed on Saturday 22 May after racing, the fleet will not be split but will continue to sail in a round robin.

7.1.6. The number of competitors in the Gold, Silver and Bronze fleet of the Optimist class will be 25% of the total number of competitors in this class, rounded up to the next whole number. The Emerald fleet will consist of the remainder.

7.1.7. The number of competitors in the Gold and Silver fleet of the Splash class will be 33.3% of the total number of competitors in this class, rounded up to the next whole number. The Bronze fleet will consist of the remainder.

#### 7.2 *Flash Class:*

7.2.1. The Flash class will sail all races in one fleet.

## 8 PROGRAM AND SCHEDULE OF RACES

8.1 The championships are programmed as follows:

| Date         | Time  | Optimist                     | Splash              | Flash   |
|--------------|-------|------------------------------|---------------------|---------|
| Wed 19 May   | 17.00 | Registration and measurement |                     |         |
| Thurs 20 May | 08.30 | Registration and Measurement |                     |         |
|              | 13.00 | 2 races of 4 starts          | 2 races of 3 starts | 2 races |
| Fri 21 May   | 10.30 | 3 races of 4 starts          | 3 races of 3 starts | 3 races |
| Sat 22 May   | 10.30 | 3 races of 4 starts          | 3 races of 3 starts | 3 races |
| Sun 23 May   | 10.30 | 2 races of 4 starts          | 2 races of 3 starts | 2 races |

8.2 The scheduled time of the warning signal for the first race each day is displayed in the schedule of races in Attachment 3.

8.3 When more than one race (or sequence or races, for two or more fleets) will be held on the same day, the warning signal for each succeeding race will be made

as soon as practicable. To alert boats that another race or sequence of races will begin soon, the postponement signal will be displayed for at least four minutes before a warning signal is displayed.

8.4 On the last day of the regatta no warning signal will be made after 15.00 hrs.

## 9 CLASS FLAGS

9.1 *Optimist and Splash class:*

9.1.1. During the qualifier series division flags shall be considered Class flags (see instruction 7.1.4).

9.1.2. During the final races the class flags shall be:

| <b>Fleet</b> | <b>Class flag<br/>Optimist</b> | <b>Class flag<br/>Splash</b> |
|--------------|--------------------------------|------------------------------|
| Gold         | Yellow                         | Yellow                       |
| Silver       | Blue                           | Blue                         |
| Bronze       | Green                          | Green                        |
| Emerald      | White                          | n/a                          |

9.1.3. All boats shall display a coloured ribbon (corresponding with the colour of their division flag).

For the Optimist Class this ribbon shall be attached to the top of the sprit.

For the Splash Class this ribbon shall be attached to the top of their mainsail.

9.2 *Flash class:*

The class flag shall be the flag of the Flash Class

## 10 RACING AREAS

10.1 Classes are assigned to racing areas as follows:

| <b>Class</b> | <b>Race Area</b> |
|--------------|------------------|
| Optimist     | 1                |
| Splash       | 2                |
| Flash        | 2                |

10.2 Attachment 1 shows the location of racing areas.

## 11 THE COURSES

11.1 The diagrams in Attachment 2 show the courses, including the approximate angles between legs, the order in which marks are to be passed, and the side on which each mark is to be left.

11.2 No later than the warning signal, the race committee signal boat will display the approximate compass bearing of the first leg.

11.3 When there is a gate, boats shall sail between the gate marks from the direction of the previous mark and round either gate mark.

11.4 For the Optimist class the courses will not be shortened. This changes rule 32.

## 12 MARKS

12.1 The marks of the course areas 1 and 2 are described in Attachment 2.

12.2 New marks, as provided in instruction 14.1, will be red cylindrical buoys.

12.3 The starting marks will be the race committee signal boat at the starboard end and a pole mark at the port end.

12.4 The finishing marks will be a race committee boat at the starboard end and a pole mark at the port end.

12.5 A race committee boat signalling a change of course is a mark as provided in instruction 14.3.

### **13 THE START**

13.1 Races will be started by using rule 26 with the warning signal given 5 minutes before the starting signal.

13.2 The starting line will be between an orange flag on the race committee signal boat at the starboard end and an orange flag on a pole mark at the port end.

13.3 Boats whose warning signal has not been made shall avoid the starting area.

13.4 A boat starting later than 4 minutes after her starting signal will be scored Did Not Start. This changes rule A4.1.

### **14 CHANGE OF THE POSITION OF THE NEXT MARK**

14.1 To change the position of the next mark, the race committee will lay a new mark or gate (or move the finishing line) and remove the original mark as soon as practicable. The change will be signalled before the leading boat has begun the leg, although the new mark may not yet be in position. Any mark to be rounded after rounding the new mark may be relocated without further signalling to maintain the course shape. When in a subsequent change a new mark is replaced, it will be replaced by an original mark.

14.2 Rule 33 is changed so that, instead of displaying a compass bearing, the race committee will display a green flag if the direction is changed to starboard or a red flag if the direction is changed to port.

14.3 Except at a gate, boats shall pass between the race committee boat signalling the change of course and the nearby mark, leaving the mark to port and the race committee boat to starboard. This changes rule 28.1.

### **15 THE FINISH**

15.1 The finishing line will be between a blue flag on the race committee boat at the starboard end and a blue flag on a pole mark at the port end.

15.2 When the course for the Splash and/or Flash class is shortened at a gate (if used), a race committee boat near the gate will display flag S and boats shall finish by sailing through the gate from the direction of the previous mark. The finishing line will be between the gate marks. This changes race signal S.

### **16 PENALTY SYSTEM**

16.1 A boat that has taken a penalty or retired under rule 31.2 or 44.1 shall complete an acknowledgement form at the Regatta Office within the protest time limit.

## 17 TIME LIMITS AND TARGET TIMES

17.1 Time limits and target times are as follows:

| Class    | Time limit | Mark 1 time limit | Target time |
|----------|------------|-------------------|-------------|
| Optimist | 90 minutes | 30 minutes        | 60 minutes  |
| Splash   | 90 minutes | 30 minutes        | 60 minutes  |
| Flash    | 90 minutes | 30 minutes        | 60 minutes  |

If no boat has passed Mark 1 within the Mark 1 time limit the race will be abandoned.

17.2 Boats failing to finish within 15 minutes after the first boat sails the course and finishes will be scored Did Not Finish. This changes rules 35 and A4.1.

## 18 PROTESTS AND REQUESTS FOR REDRESS

18.1 Rule 61.1(a) is modified by adding the sentence: A boat intending to protest shall also sail along

the other side of the committee boat at the starboard end of the finishing line as soon as possible after finishing, and inform the RC of the boat(s) to be protested until the intention to protest has been acknowledged by the RC (subject to rule 62).

Should circumstances make it impossible to meet this requirement then the boat shall report its intent in the Regatta Office at the harbour immediately upon landing.

18.2 Protest forms are available at the Regatta Office. Protests shall be delivered there within the protest time limit.

18.3 For each class, the protest time limit is 75 minutes after the last boat has finished the last race of the day. The same protest time limit applies to all protests by the race committee and jury and to requests for redress. This changes rules 61.3 and 62.2.

18.4 Notices will be posted within 20 minutes of the protest time limit to inform competitors of hearings in which they are parties or named as witnesses. Hearings will be held in one of the jury offices.

18.5 Notices of protests by the race committee or jury will be posted to inform boats under rule 61.1(b).

18.6 A list of boats that, under instruction 16.4, have acknowledged breaking rule 42 or have been disqualified by the jury will be posted before the protest time limit.

18.7 Breaches of instructions 2, 3, 13.3, 16.1, 20, 21, 24, 25, 26, 27, 28 and 29 will not be grounds for a protest by a boat. This changes rule 60.1(a). Penalties for these breaches may be less than disqualification if the jury so decides.

18.8 On the last day of the regatta a request for redress or for reopening a hearing shall be delivered

(a) within the protest time limit if the party requesting redress or reopening became aware of the relevant incident or was informed of the decision on the previous day;

(b) no later than 30 minutes after the party requesting redress or reopening became aware of the relevant incident or was informed of the decision on that last day.

This changes rules 62 and 66.

18.9 For the qualifier races of the Optimist and Splash class, the decisions of the jury will be final as provided in rule 70.4.

## **19 SCORING**

- 19.1 The Low Point scoring system of Appendix A will apply.
- 19.2 Only qualifier races that have been completed for all 8 divisions of the Optimist class or all 6 divisions of the Splash class will count.
- 19.3 4 races are required to be completed to constitute a series.
- 19.4 (a) When fewer than 5 races have been completed, a boat's series score will be the total of her race scores.
- (b) When 5 races or more have been completed, a boat's series score will be the total of her race scores excluding her worst score, for the Optimist and Splash classes excluding only her worst score from the qualifier races.
- 19.5 To request correction of an alleged error in posted race or series results, a boat shall complete a scoring enquiry form available at the Regatta Office.
- 19.6 The scoring abbreviation for a discretionary penalty imposed under instruction 18.7 will be DPI.

## **20 SAFETY REGULATIONS**

- 20.1 Each competitor shall check out by having his/her individual tally removed from the tally board by the beach master each day before leaving the harbour. After returning ashore he/she shall immediately show this tally number to the beach master before parking his/her boat in the designated area. See also the separate instruction on the notice board.
- Competitors failing to comply with this instruction will be penalized with five points for each race of the day on which they failed to observe this instruction. This penalty will be applied without a hearing (altering and additional to rule 63.1).
- The sail numbers of the boats so penalized will be posted as soon as possible, but 5 minutes before the end of Protest Time at the latest.
- 20.2 An adequate personal flotation device shall be worn at all times while afloat. Wet suits and dry suits do not constitute adequate personal buoyancy. If the buoyancy device is of an inflatable type, it shall be inflated at all times while afloat.
- 20.3 Any boat that retires from a race shall inform the RC at sea if possible and shall in all cases inform the Regatta Office with the least possible delay.
- 20.4 Competitors who require assistance should so signify by blowing a whistle or waving the paddle or one arm. The RC reserves the right to assist competitors who, in the opinion of the Committee, require assistance, regardless of the wishes of the competitor.
- 20.5 When flag "V" (a red cross on a white background) is displayed on any Race Committee boat, all coaches and support boats are permitted to enter the race area and shall cooperate with the race committee in rescue assistance.

## **21 EQUIPMENT and REPLACEMENT OF EQUIPMENT**

- 21.1 Competitors are allowed to use only one hull, dagger board, rudder (with tiller and extension), mast, boom, sprit and sail during the Regatta.
- 21.2 Substitution of damaged equipment may be permitted, after approval has been given by the Jury.

- 21.3 When damage occurs during the day the competitor shall inform the RC. Substitution of damaged equipment before the next race may be permitted providing that the damaged equipment has been checked by the RC at sea, and the substituting equipment is presented for measurement to the Measurement Committee after the end of the day's racing. Such substitution is subject to the approval of the Jury given retrospectively.

## **22 EQUIPMENT AND MEASUREMENT CHECKS**

- 22.1 Upon arrival at the venue in Workum competitors shall report to the Regatta Office with a valid measurement certificate and measurement form for a check on registration and Class Rules. Other equipment may also be checked.
- 22.2 Under exceptional circumstances the RC may permit, only upon a written request, a boat to use a sail number other than required by rule 77 and rule G.
- 22.3 A boat or equipment may be inspected at any time for compliance with the class rules and sailing instructions. On the water, a boat can be instructed by a race committee measurer to proceed immediately to a designated area for inspection.

## **23 OFFICIAL BOATS**

Official boats will be marked as follows:

- 23.1 Race committee boats will fly a yellow flag marked "RC".  
When a Race committee boat so identified displays flags "N over H", the race(s) are abandoned and all competitors shall proceed immediately to the harbour and await further instructions.
- 23.2 Jury boats will fly flag "J".
- 23.3 Rescue boats will fly a light blue (mint) flag.

## **24 SUPPORT BOATS**

- 24.1 During the races there shall be no communication between competitors and non-competitors.

After the first warning signal, team support and private boats shall stay well clear of the starting, racing and finishing area until after the finish of the last boat.

- 24.2 No team support and private boats are permitted in the starting area between the first warning signal of the first fleet in a race and the valid start of the last fleet of that race.

However, when after a general recall or a postponement, flag "F" (with one sound signal) is displayed at the starting vessel, team support and private boats may enter the starting area until flag "F" is lowered (with one sound signal).

- 24.3 In addition to the race area shall be any other area within 100 metres of any boat still racing.
- 24.4 Non-competitors may remain in the waiting area, or, when navigating up or down wind, shall keep well clear of the area inside the interrupted line as indicated in Attachment 2, or by using the same small corridor as the boats that are returning from the finishing line to the start.
- 24.5 An orange buoy will be laid upwind of the finishing vessel. Support boats are not permitted on the port side of the line between the finishing vessel and the orange buoy or its extensions, seen from the direction of marks 3 and 4.

24.6 Support boats shall register at the race office before the first race and be marked with a numbered flag supplied by the race committee.

## **25 TRASH DISPOSAL**

25.1 Boats shall not put trash in the water. Trash may be placed aboard support and race committee boats.

## **26 BERTHING**

26.1 Boats shall be kept in their assigned places in the boat park.

## **27 Spare.**

## **28 Spare.**

## **29 RADIO COMMUNICATION**

29.1 A boat shall neither make radio transmissions while racing nor receive radio communications not available to all boats. This restriction also applies to mobile telephones.

## **30 PRIZES**

30.1 Prizes will be given as follows:

### OPTIMIST CLASS

Prizes are awarded for the final results of the championship to the 10 highest ranked competitors in each of the Gold, Silver, Bronze and Emerald fleets.

The boat placed first in the final results of the Gold fleet or the final results overall, is also awarded the title of Netherlands Champion 2004.

In addition to the above a number of special prizes will be awarded, such as:

1<sup>st</sup>, 2<sup>nd</sup> and 3<sup>rd</sup> Benjamin (born in 1992 or later)

1<sup>st</sup> Girl

Best Country (best 4 sailors of a country)

Best Netherlands Competitor

Stoomboorprijs (nr 10 Nederlandse Voorjaarsselectie 2004)

### SPLASH and FLASH CLASS

Prizes are awarded for the final results of the championship to the 10 highest ranked competitors in each of the SPLASH Gold, Silver and Bronze fleets and the FLASH fleet.

The boats placed first in the final results of the SPLASH Gold fleet or the final results overall of the Splash class and in the final results of the FLASH fleet are also awarded the title of Netherlands Champion 2004 and will receive the relevant Challenge Cup.

## **31 DISCLAIMER OF LIABILITY**

31.1 Competitors participate in the regatta entirely at their own risk. See rule 4, Decision to Race. The organizing authority will not accept any liability for material damage or personal injury or death sustained in conjunction with or prior to, during, or after the regatta.

## **32 INSURANCE**

32.1 Each participating boat shall be insured with valid third-party liability insurance with a minimum cover of €680.000,- per event or the equivalent.

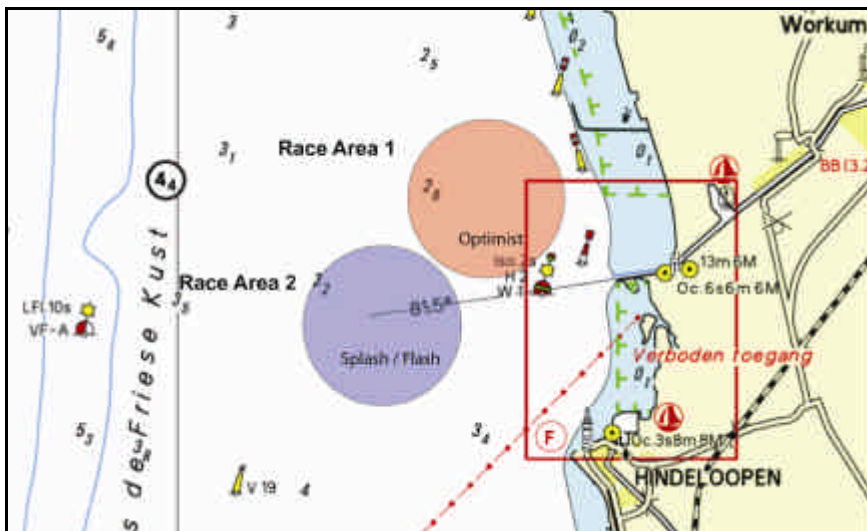
### 33 BEACHMASTER - PARKING - LEAVING FOR SEA

33.1 Each competitor shall observe the instructions of the beach master. Not observing the instructions on parking may cause the disqualification of the related competitor.

33.2 Competitors shall not leave for sea when flag “A” has not been displayed ashore yet.

## Attachment 1

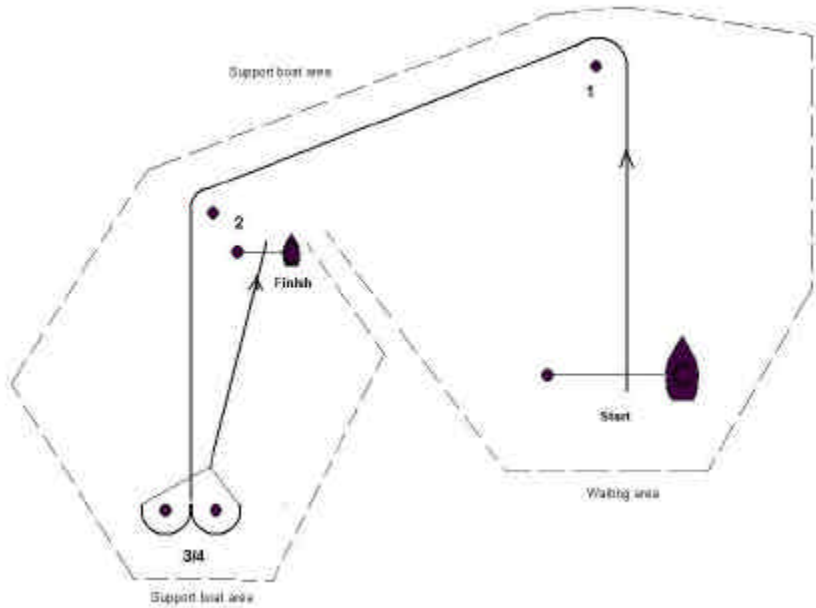
### The race areas



## Attachment 2

(the course – waiting and restricted area's)

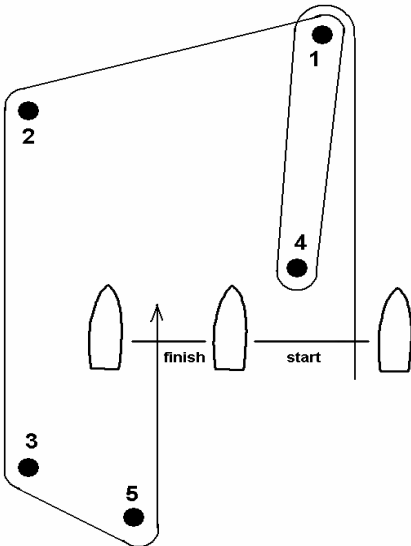
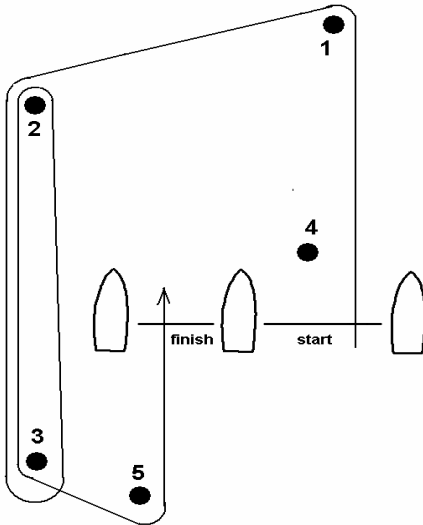
### Race Area 1 (Optimist)



Not to scale; approximate angles

The marks 1, 2, 3 and 4 are yellow numbered cylindrical buoys.

### Race Area 2 (Splash and Flash)



The marks 1, 2, 3, 4 and 5 are black and yellow numbered cylindrical buoys

## Attachment 3

### Schedule of races

#### Optimist Class

| Day      | Date    | Time of warning signal | Race     | Divisions |
|----------|---------|------------------------|----------|-----------|
| Thursday | May 20: | 12.55                  | Race 1A  | 1 & 2     |
|          |         | 13.05                  | Race 1B  | 3 & 4     |
|          |         | 13.15                  | Race 1C  | 5 & 6     |
|          |         | 13.25                  | Race 1D  | 7 & 8     |
|          |         | a.s.a.p.               | Race 2A  | 2 & 4     |
|          |         | + 10 min.              | Race 2B  | 1 & 3     |
|          |         | + 20 min               | Race 2C  | 6 & 8     |
|          |         | + 30 min               | Race 2D  | 5 & 7     |
| Friday   | May 21: | 10.30                  | Race 3A  | 2 & 8     |
|          |         | 10.40                  | Race 3B  | 4 & 6     |
|          |         | 10.50                  | Race 3C  | 1 & 7     |
|          |         | 11.00                  | Race 3D  | 3 & 5     |
|          |         | a.s.a.p.               | Race 4A  | 4 & 8     |
|          |         | + 10 min.              | Race 4B  | 2 & 6     |
|          |         | + 20 min.              | Race 4C  | 1 & 5     |
|          |         | + 30 min               | Race 4D  | 3 & 7     |
|          |         | a.s.a.p.               | Race 5A  | 1 & 6     |
|          |         | + 10 min.              | Race 5B  | 2 & 5     |
|          |         | + 20 min               | Race 5C  | 3 & 8     |
|          |         | + 30 min               | Race 5D  | 4 & 7     |
| Saturday | May 22: | 10.25                  | Race 6A  | 1 & 4     |
|          |         | 10.35                  | Race 6B  | 5 & 8     |
|          |         | 10.45                  | Race 6C  | 2 & 3     |
|          |         | 10.55                  | Race 6D  | 6 & 7     |
|          |         | a.s.a.p.               | Race 7A  | 1 & 8     |
|          |         | + 10 min.              | Race 7B  | 4 & 5     |
|          |         | + 20 min.              | Race 7C  | 2 & 7     |
|          |         | + 30 min               | Race 7D  | 3 & 6     |
|          |         | a.s.a.p.               | Race 8A  | 4 & 8     |
|          |         | + 10 min.              | Race 8B  | 1 & 5     |
|          |         | + 20 min               | Race 8C  | 3 & 7     |
|          |         | + 30 min               | Race 8D  | 2 & 6     |
| Sunday   | May 23: | 10.25                  | Race 9A  | Gold      |
|          |         | 10.35                  | Race 9B  | Silver    |
|          |         | 10.45                  | Race 9C  | Bronze    |
|          |         | 10.55                  | Race 9D  | Emerald   |
|          |         | a.s.a.p.               | Race 10A | Gold      |
|          |         | + 10 min.              | Race 10B | Silver    |
|          |         | + 20 min.              | Race 10C | Bronze    |
|          |         | + 30 min               | Race 10D | Emerald   |

## Splash and Flash Class

| Day      | Date    | Time of warning signal | Race     | Divisions |           |
|----------|---------|------------------------|----------|-----------|-----------|
| Thursday | May 20: | 12.55                  | Race 1A  | Flash     | Outerloop |
|          |         | a.s.a.p.               | Race 1B  | 1 & 2     | Outerloop |
|          |         | a.s.a.p.               | Race 1C  | 4 & 5     | Innerloop |
|          |         | a.s.a.p.               | Race 1D  | 3 & 6     | Innerloop |
|          |         | a.s.a.p.               | Race 2A  | Flash     | Outerloop |
|          |         | a.s.a.p.               | Race 2B  | 1 & 4     | Outerloop |
|          |         | a.s.a.p.               | Race 2C  | 2 & 3     | Innerloop |
|          |         | a.s.a.p.               | Race 2D  | 5 & 6     | Innerloop |
| Friday   | May 21: | 10.25                  | Race 3A  | Flash     | Outerloop |
|          |         | a.s.a.p.               | Race 3B  | 2 & 6     | Outerloop |
|          |         | a.s.a.p.               | Race 3C  | 3 & 4     | Innerloop |
|          |         | a.s.a.p.               | Race 3D  | 1 & 5     | Innerloop |
|          |         | a.s.a.p.               | Race 4A  | Flash     | Outerloop |
|          |         | a.s.a.p.               | Race 4B  | 4 & 6     | Outerloop |
|          |         | a.s.a.p.               | Race 4C  | 2 & 5     | Innerloop |
|          |         | a.s.a.p.               | Race 4D  | 1 & 3     | Innerloop |
|          |         | a.s.a.p.               | Race 5A  | Flash     | Outerloop |
|          |         | a.s.a.p.               | Race 5B  | 3 & 5     | Outerloop |
|          |         | a.s.a.p.               | Race 5C  | 1 & 6     | Innerloop |
|          |         | a.s.a.p.               | Race 5D  | 2 & 4     | Innerloop |
| Saturday | May 22: | 10.25                  | Race 6A  | Flash     | Outerloop |
|          |         | a.s.a.p.               | Race 6B  | 3 & 6     | Outerloop |
|          |         | a.s.a.p.               | Race 6C  | 1 & 2     | Innerloop |
|          |         | a.s.a.p.               | Race 6D  | 4 & 5     | Innerloop |
|          |         | a.s.a.p.               | Race 7A  | Flash     | Outerloop |
|          |         | a.s.a.p.               | Race 7B  | 2 & 3     | Outerloop |
|          |         | a.s.a.p.               | Race 7C  | 5 & 6     | Innerloop |
|          |         | a.s.a.p.               | Race 7D  | 1 & 4     | Innerloop |
|          |         | a.s.a.p.               | Race 8A  | Flash     | Outerloop |
|          |         | a.s.a.p.               | Race 8B  | ! & 5     | Outerloop |
|          |         | a.s.a.p.               | Race 8C  | 3 & 4     | Innerloop |
|          |         | a.s.a.p.               | Race 8D  | 2 & 6     | Innerloop |
| Sunday   | May 23: | 10.25                  | Race 9A  | Flash     | Outerloop |
|          |         | a.s.a.p.               | Race 9B  | Gold      | Outerloop |
|          |         | a.s.a.p.               | Race 9C  | Silver    | Innerloop |
|          |         | a.s.a.p.               | Race 9D  | Bronze    | Innerloop |
|          |         | a.s.a.p.               | Race 10A | Flash     | Outerloop |
|          |         | a.s.a.p.               | Race 10B | Gold      | Outerloop |
|          |         | a.s.a.p.               | Race 10C | Silver    | Innerloop |
|          |         | a.s.a.p.               | Race 10D | Bronze    | Innerloop |