

DUTCH YOUTH REGATTA 2008 WORKUM

for
OPTIMIST
OPTIMIST BENJAMIN
SPLASH
LASER RADIAL
FLASH
LASER 4.7
CADET
HOBIE 16 SPI
420
29er
YNGLING YOUTH

NOTICE OF RACE (Version 1.1)

This version replaces version 1.0. In this version Notice 1.4 and attachment 3 are added, Notice 1.3 is changed and the old notices 1.3 – 1.9 are renumbered.

The 2007 Dutch Youth Regatta will include:

The **OPEN DUTCH CHAMPIONSHIP** for the Optimist, Optimist Benjamin, Splash, Flash, Laser 4.7 and Cadet classes.

The **CLASS CHAMPIONSHIP** for the 420 and 29er classes.

The **YOUTH CLASS CHAMPIONSHIP** for Hobie 16 class with spi.

The **YOUTH CLASS EVENT** for the Yngling Youth Class.

The **CLASS EVENT** for the Laser Radial class.

The event will be sailed on the IJsselmeer off Workum, the Netherlands, May 1 – 4 inclusive, 2008. The Championships are organized under the authority of Sailing Club Workum and the DYR foundation, in conjunction with The Royal Netherlands Yachting Union.

1 RULES

- 1.1 The regatta will be governed by the rules as defined in *The Racing Rules of Sailing* (RRS).
- 1.2 The Rules for Championships Sailing and Boardsailing of The Royal Netherlands Yachting Union will apply for those classes that sail a championship.
- 1.3 RRS Appendix P will be replaced by a new "SI-Appendix P". The full text of this new appendix will appear in the Sailing Instructions.
Add the following sentence to SI-P2.1:
On the first protest, if protested after she has finished, she will be given a scoring penalty of 8 points without a hearing.
- 1.4 Rules C.7.1, F.6.2(c), F.6.2(f), D.6.1.3, D.6.1.1 and G.3.2 of the Splash class rules are changed. These changes are shown in Attachment 3.
- 1.5 If there is a conflict between languages the English text will take precedence.
- 1.6 **Sails shall have the full sail number and National Letters in accordance with the Class Rules and RRS.**
- 1.7 Add to RRS A11: ARB means scoring penalty after arbitration, PTS scoring penalty for a yellow flag after finish.
- 1.8 RRS 32.1 is changed (see rule 6.4 of this notice)
- 1.9 For Hobie 16 spi, the event will be considered as a special youth event in accordance with appendix B of the International Hobie Class Association 2005 – 2008 Class Rules.
- 1.10 International Hobie Class Association General Rule 17.7(a) is changed by Notice 3.1

2 ADVERTISING

- 2.1 All competitors shall display advertising of the event sponsor on their boats in accordance with ISAF Regulation 20.3.1(d)(i).

3 ELIGIBILITY AND ENTRY

- 3.1 The regatta is open to all boats of the:

- Optimist (born in 1993, 1994 or 1995),
- Optimist Benjamin (born in 1996 or later),
- Splash, Laser Radial, Flash, Laser 4.7, Cadet, 420 and 29er class
- Yngling Youth (each crew member must be born in 1985 or later)
- For the Hobie 16 spi class, the regatta is open for all boats of which both crew members are under the age of 22 years on December 31, 2008 (This changes General Class Rule 17.7(a)).

In addition, all responsible persons with a Dutch nationality are required to have a Dutch starting license. This license will be checked at registration.

- 3.2 Competitors in classes with an age limit, shall bring a proof of their birth date (i.e. passport) upon registration.
- 3.3 Eligible boats shall only enter by completing the entry form, available from the DYR web site (<http://www.dutchyouthregatta.org>), together with the payment of the required fee to the organisers before the entry closing date. Entries received without payment will not be **confirmed** until the entry fee is received. A list of **confirmed entries** will be posted daily on the DYR web site together with a list of entries that are not **confirmed**. Entries that are not **confirmed** may be rejected in favour of later **confirmed entries**.
- 3.4 Entry for all classes closes on **April 18, 2008** or before on the date and time when the maximum limit **of entries that have been confirmed** for a class is reached as mentioned in paragraph 3.4. After the entry closes for a class the organisers will start a waiting list for competitors and competitors will be advised that they are on a waiting list. Competitors on a waiting list will only be accepted for entry if they have been advised in writing that they have been given a late entry.

Do not travel to the regatta if you do not have a confirmed entry or an email from the organisers as no late entries will be accepted on site!

- 3.5 The following restrictions to the number of boats apply:

Class	Maximum number of allowed confirmed entries
Optimist	304
Optimist Benjamin	152
Splash	228
Laser Radial	76
Flash	76
Laser 4.7	76
420	76
Cadet	76
Hobie 16 spi	76
29er	76
Yngling Youth	76

4 Spare.

5 FEES

- 5.1 Required entry fees are as follows:

Class	Entry Fee
Optimist	€ 80,--
Optimist Benjamin	€ 80,--
Splash	€ 80,--
Laser Radial	€ 80,--
Flash	€ 80,--
Laser 4.7	€ 80,--
420	€ 105,--
Cadet	€ 105,--
Hobie 16 spi	€ 105,--
29er	€ 105,--
Yngling Youth	€ 120,--

6 RACE FORMAT

- 6.1 The regatta will consist of a qualifying series and a final series for the Optimist and Splash classes if more than 76 boats have registered in each class and also for the 29er class when more than 38 boats have registered in this class.
The Optimist Benjamin will sail in a round robin when more than 76 boats have registered.
- 6.2 The maximum number of boats in a starting group of the qualifier or round robin series will be 76 (38 for 29er class).
- 6.3 The fleet will be split into final series fleets when 5 or more valid races have been sailed by Saturday evening 3 May and after the last protest of that day. If less than 5 valid races have been sailed, the fleet will continue sailing the round robin.
- 6.4 When the last round robin race of a series is not valid for all starting groups, the race shall be abandoned for all concerned starting groups (addition to RRS 32.1).

7 SCHEDULE

- 7.1 Registration and measurement

	Optimist	All other classes
Wednesday April 30	From 12.00 hrs to 22.00 hrs.	From 16.00 hrs to 22.00 hrs.
Thursday May 1	From 8.00 hrs to 10.00 hrs.	From 8.00 hrs to 10.00 hrs.

- 7.2 Dates of racing and number of races

Date	Number of scheduled races for all classes except Hobie 16 spi and 29er*	Number of scheduled races for Hobie 16 spi and 29er classes only*
May 1	2	3
May 2	3	4
May 3	3	4
May 4	2	3

*) For qualifier series fleets, 1 race is considered to consist of the number of starts needed to start all qualifier groups.

- 7.3 The scheduled time of the warning signal for the first race is 12.55 hrs on Thursday May 1.

8 MEASUREMENTS

- 8.1 Each boat shall produce a valid measurement certificate and measurement form. In addition measurement and checks will be made at registration and may be made on the water.
- 8.2 All competitors shall use only one hull (or set of hulls for Hobie 16 spi only), (set of) sail(s), mast, boom, sprit (Optimist only), centreboard and rudder (or set of rudders for Hobie 16 spi only), which shall be identified during measurement.
- 8.3 In the event of damage, boats and equipment may only be substituted with the written permission of the Protest Committee. If the damage occurs later than 90 minutes before the first scheduled start on a racing day and before the start of the last race of the day, provisional verbal permission shall be obtained from the Protest Committee or Race Committee and the written permission of the Protest Committee shall be applied for before the end of Protest Time at the end of the day in which the substitution takes place.

9 SAILING INSTRUCTIONS

- 9.1 The sailing instructions will be available as from 12.00 hrs on April 30 at the Regatta Office (located on camping "it Soal" in Workum).

10 VENUE

- 10.1 Attachment 1 shows the location of the regatta harbour.
- 10.2 Attachment 2 shows the location of the racing areas.

11 THE COURSES

The courses to be sailed will be as follows:

- 11.1 Optimists will sail the normal course that is used for Optimist World and Continental Championships.
- 11.2 Hobie 16 spi and 29er will sail an upwind - downwind course
- 11.3 Optimist Benjamin will sail trapezoid courses with inner and outer loops or the same course as mentioned in Notice 11.1.
- 11.4 The other classes will sail trapezoid courses with inner and outer loops.

12 PENALTY SYSTEM

- 12.1 For qualifying series the decisions of the jury will be final as provided in rule 70.4.
When the requirements for splitting into final series are not met for a class, this rule shall not apply for that class.
- 12.2 Arbitration will be in effect for protests involving rules of RRS part 2. *The full text of this rule will appear in the Sailing Instructions.*
- 12.3 Rule 44.1 is changed to permit a boat to take a 30% scoring penalty as calculated in rule 44.3(c) during the arbitration hearing.

13 SCORING

- 13.1 4 races are required to be completed to constitute a series.
- 13.2 When fewer than 5 races have been completed, a boats series score will be the total of her race scores.
- 13.3 If a points scoring penalty for a breach of RRS 42 or under the Arbitration System would result in a score worse than DSQ, the penalty will be that corresponding to DSQ. The scores of other boats will not be changed.

14 SUPPORT BOATS

- 14.1 Support boats must register before the first start of the first race and shall be marked with a numbered flag available from the Race Committee.

15 BERTHING

- 15.1 Boats shall be kept in their assigned places in the boat park.

16 Spare

17 Spare

18 RADIO COMMUNICATION

- 18.1 A boat shall neither make radio transmissions while racing nor receive radio communications not available to all boats. This restriction also applies to mobile telephones.

19 PRIZES

Prizes will be given as follows:

Class	Overall	Gold	Silver	Bronze	Emerald	Best ranked girl (or ladies team)	Best Ranked Dutch Sailor
Optimist		10	3	1	1	1	1
Optimist Benjamin	10					1	1
Splash		8	3	1		1	
Laser Radial	3					1	
Laser Radial U19	1					1	
Flash	5					1	
Laser 4.7	3					1	1
420	3					1	1
Cadet	3						1
Hobie 16 spi	3						1
29er	5					1	1
Yngling youth	3					1	1

The Prize for the Open Dutch Championships will be a medal for each crew member of the winning boat and a blue floating banner for the boat.

The prize for the Class Championships will be a red floating banner for the winning boat.

In addition to the above, a number of special prizes may be awarded

20 DISCLAIMER OF LIABILITY

- 20.1 Competitors participate in the regatta entirely at their own risk. See rule 4, Decision to Race. The organizing authority and the involved Class Associations, their officers, members and volunteers will not accept any liability for material damage or personal injury or death sustained in conjunction with or prior to, during, or after the regatta.

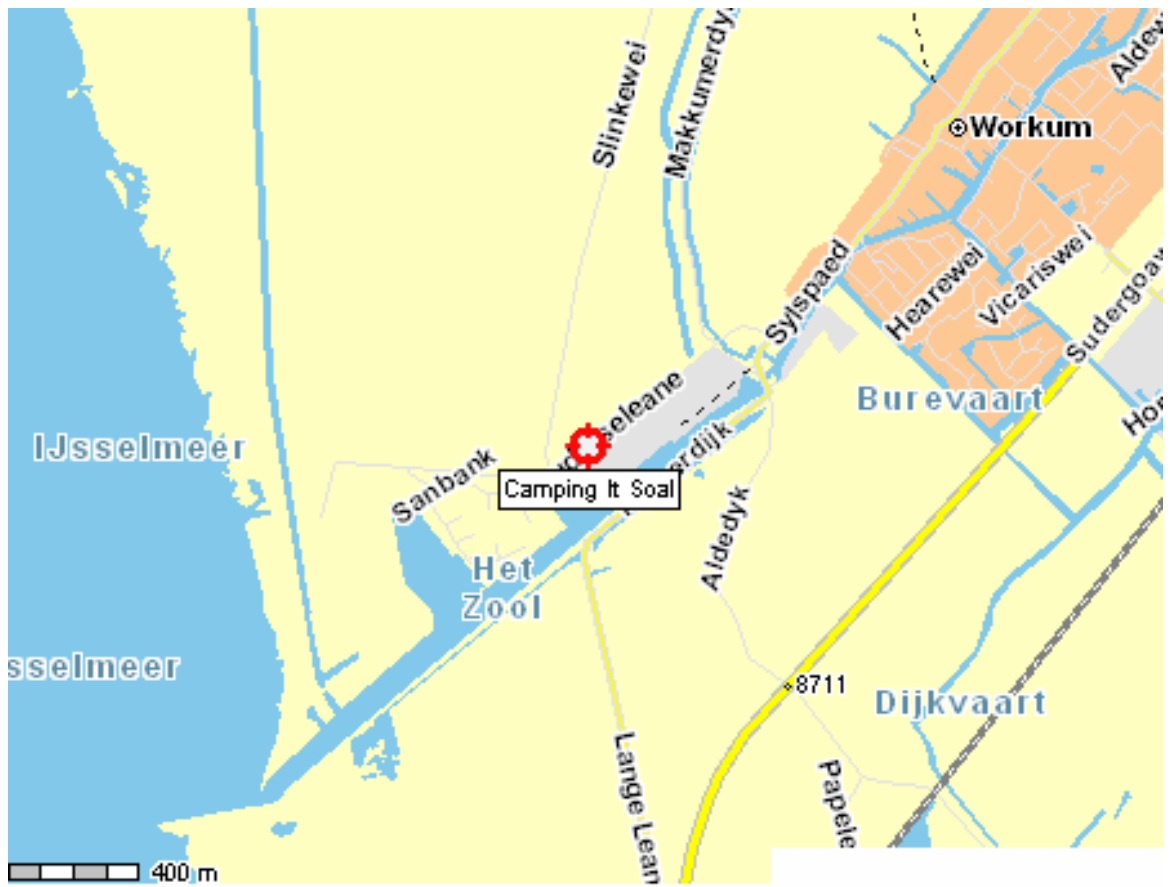
21 INSURANCE

- 21.1 Each participating boat shall be insured with valid third-party liability insurance with a minimum cover of € 1.000.000 per event or the equivalent. **A proof of this insurance (valid whilst racing) in English or Dutch must be available at registration.**

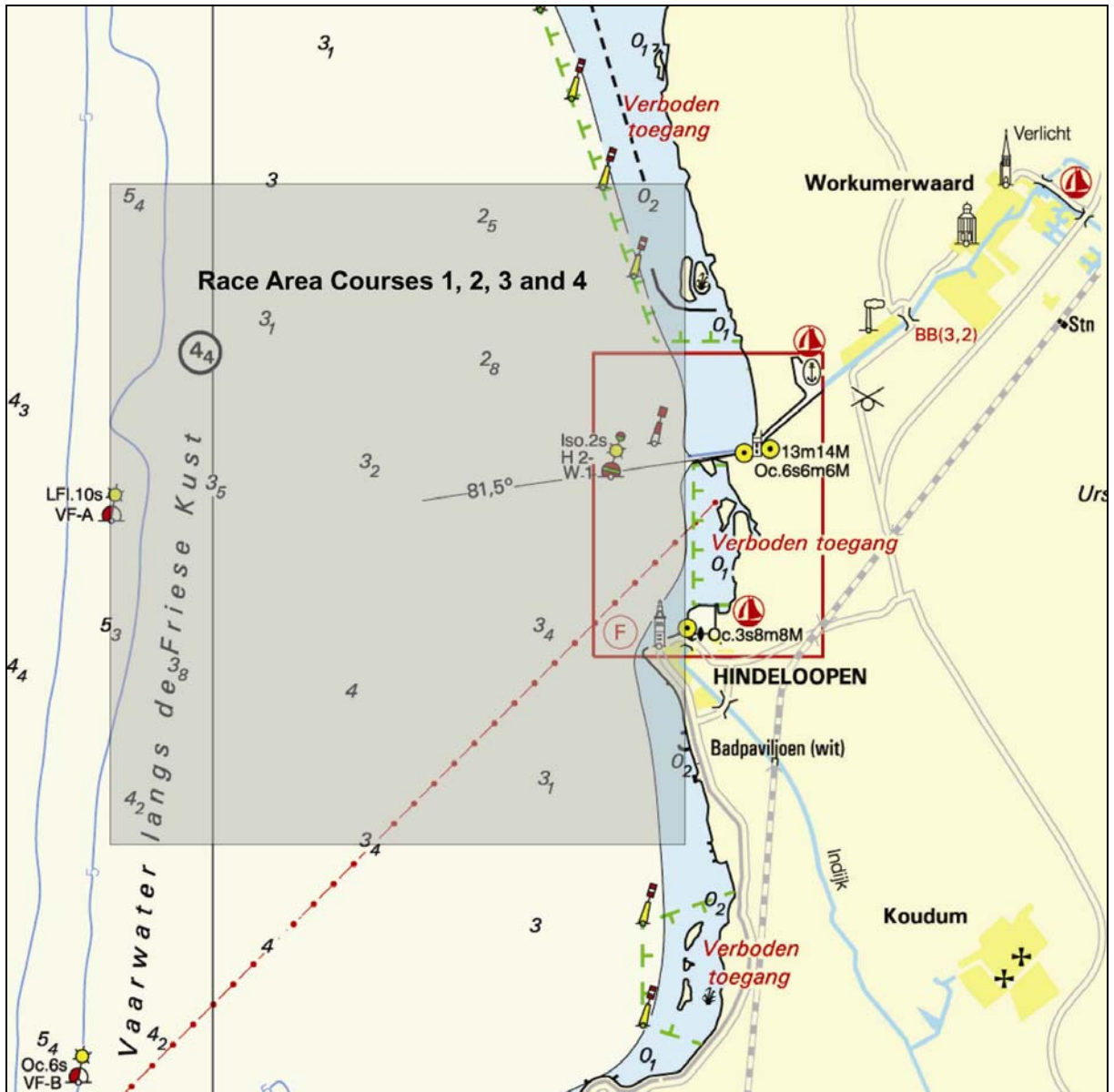
22 FURTHER INFORMATION

- 22.1 For further information www.dutchyouthregatta.org .

ATTACHMENT 1



ATTACHMENT 2



Race Area's

ATTACHMENT 3

Changed Class Rules Splash Class

CREW:

Delete C.7.1 and replace with:

The crew shall consist of one person.

Only those who have not reached their 19th birthday shall be eligible to race. During an event of less than ten consecutive days sailors shall be eligible to race if they have not reached their 19th birthday on the 1st scheduled racing day.

The crew shall be a current member of an NCA of SCIA or an individual member of SCIA when no NCA of SCIA exists in the country where the crew resides.

While racing no part of the helmsman shall be positioned forward of the mast, except when the boat is capsized, or for the short time needed to haul in the painter, straighten the wind vane or to lower or hoist the sail, or to adjust the vang.

RUNNING RIGGING:

Delete F.6.2.(c) and replace with:

The kicking strap (vang) shall be a maximum 5 to 1 purchase system. The maximum block diameter shall not exceed 30mm. There shall be a cam-cleat attached to the block system.

The kicking strap (vang) shall be fastened to the boom hook with a 20mm maximum length shackle. The kicking strap (vang) shall be fastened directly to the kicking strap (vang) eye on the mast with a 20mm maximum length shackle.

The kicking strap (vang) system may consist of a composed line. The line shall be reeved through the combination of the blocks, to form a tackle. The running end of the line may be tied to form a loop or handle. This handle may be fitted with a plastic tube to form a grip. The purchase shall not be increased by means of knots or loops within the system.

A piece of elastic cord may be fixed to the gooseneck with both ends rigged through the swivel of the block to keep the kicking strap (vang) upright when not under tension.

RUNNING RIGGING:

Delete F.6.2.(f) and replace with:

The outhaul shall consist of one of the following systems:

1. The in-boom outhaul system shall be a composed rope. The aft end of the in-boom outhaul system shall be attached to the clew eyelet and lead over the sheave block in the boom-end. The forward end of the in-boom outhaul system shall be led over the gooseneck bolt and secured to a single 20 mm maximum diameter block. The in-boom outhaul system may contain a single purchase turning block.
2. The in-boom outhaul system shall be a single piece of rope. It shall be led through a clew eyelet in the tack of the sail and over the gooseneck.

The outhaul control line shall be a double ended system using a single piece of rope. It shall run from the cleats on the front of the cockpit to the blocks near the mast and shall control the forward end of the in-boom outhaul system. The running ends may have knotted loops. Purchase shall not be increased by means of knots or loops within the system.

FITTINGS

Delete D.6.1.3 and replace with:

Blocks may be fitted with ball bearings.

FITTINGS

Add to D.6.1.1:

The mainsheet block, which may include a ratchet system, shall have a maximum block diameter of 60mm.

DIMENSIONS

Delete in G.3.2

Batten pocket width:

Inside	28 mm
Outside	40 mm

and replace with:

Uppermost batten pocket width

Inside	38 mm
Outside	50 mm

Intermediate and lower batten pocket width

Inside	28 mm
Outside	40 mm